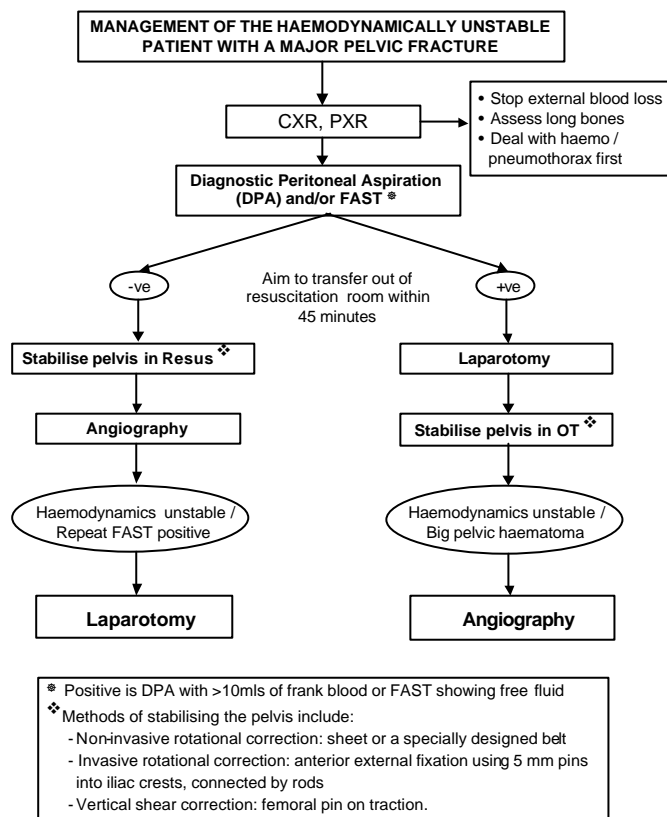
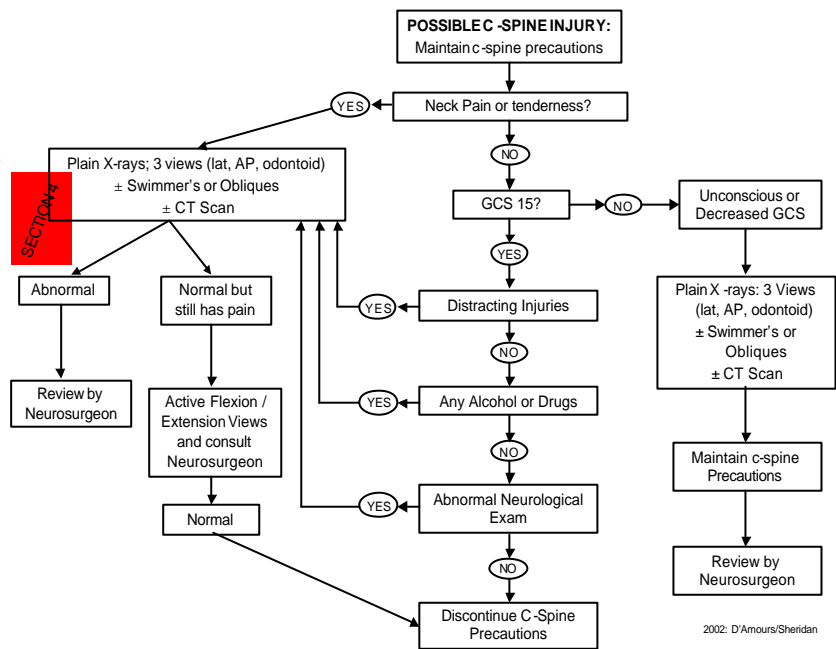


PELVIC FRACTURES - HAEMODYNAMIC INSTABILITY

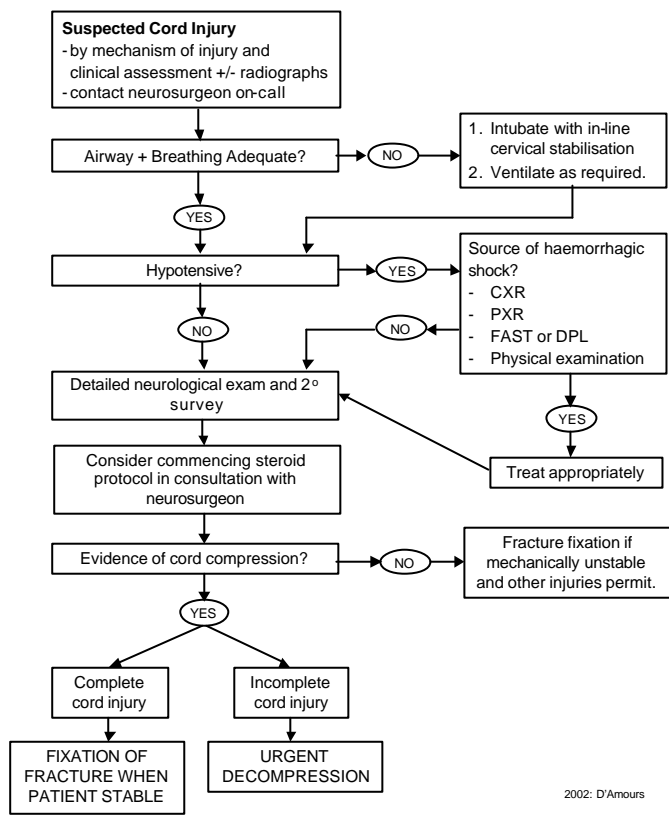


SECTION 4

CERVICAL SPINE CLEARANCE



SUSPECTED SPINAL CORD INJURY

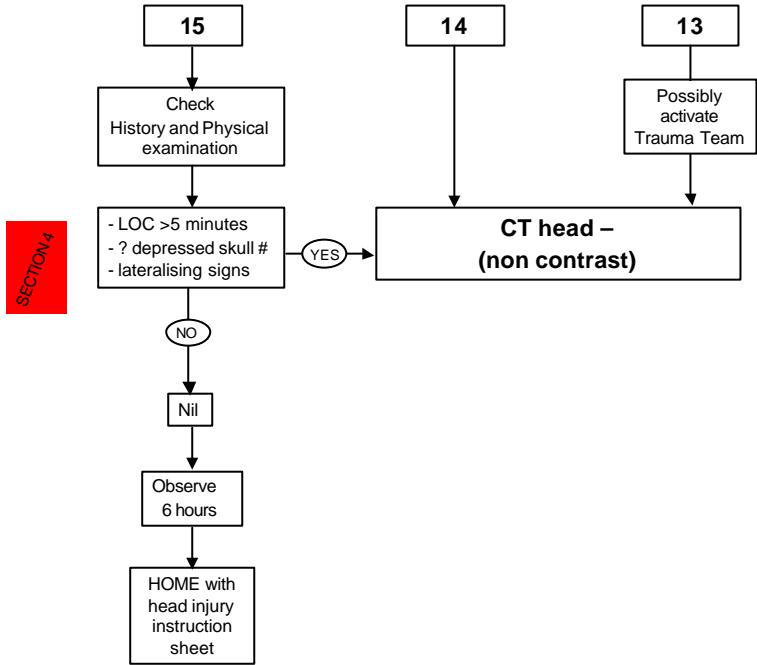


SECTION 4

2002: D'Amours

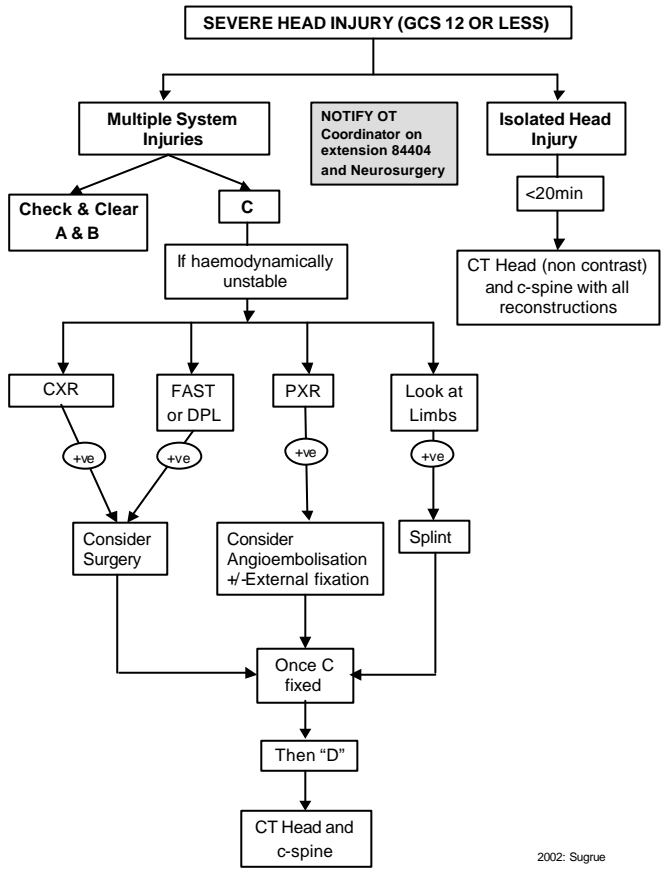
HEAD INJURY - MILD

MINOR HEAD INJURY (GCS 13 – 15)



2002: Sugrue D'Amours

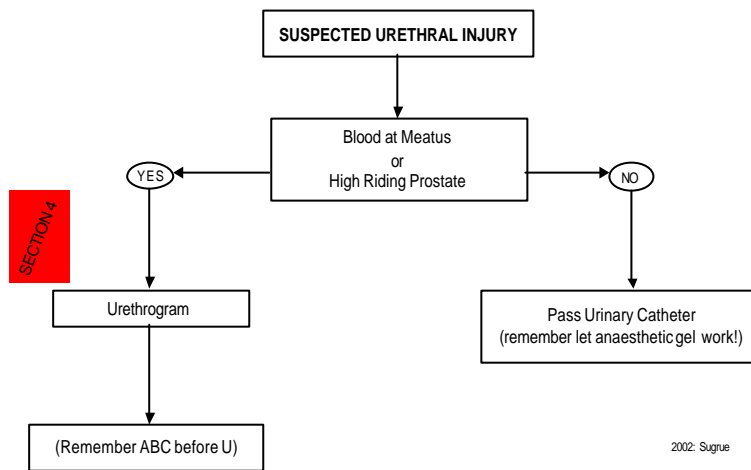
HEAD INJURY - SEVERE



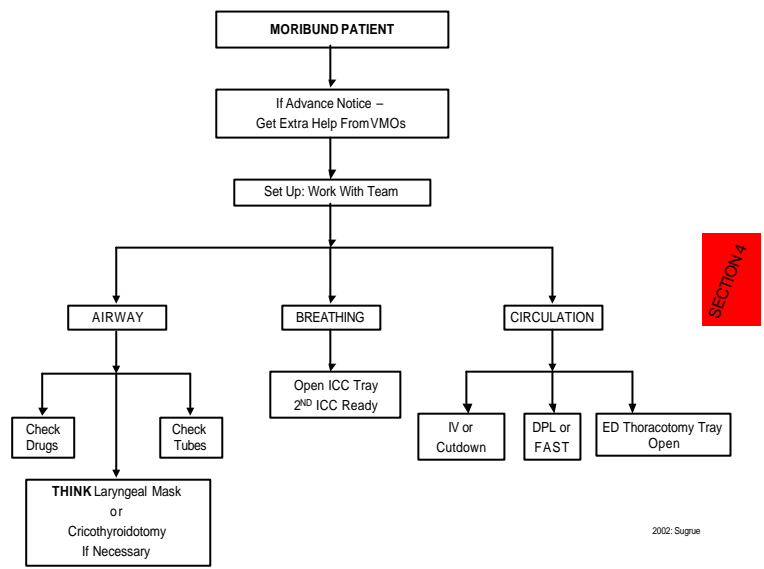
SECTION 4

2002: Sugrue

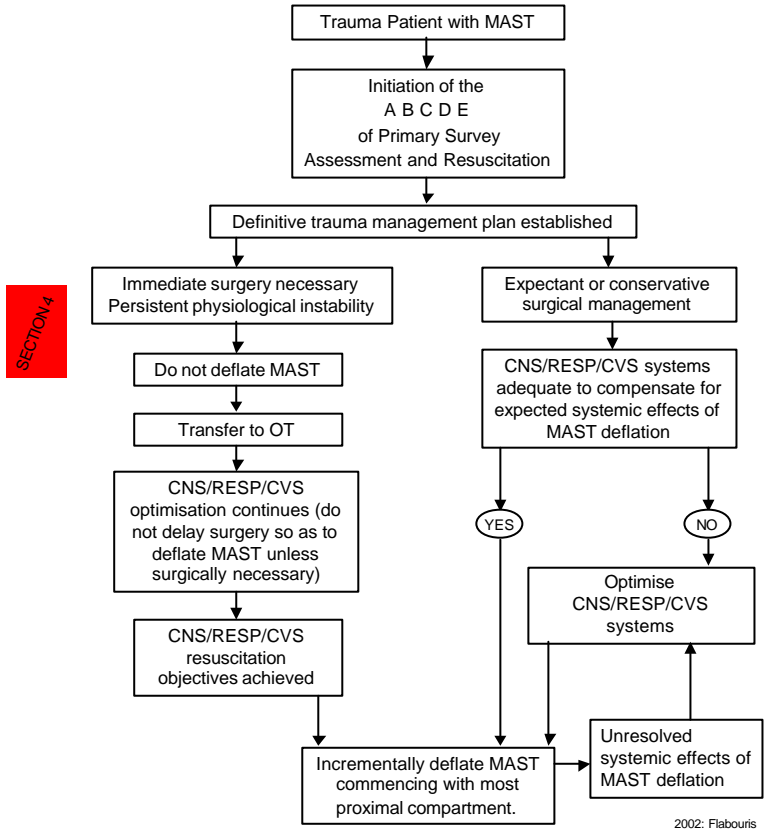
SUSPECTED URETHRAL INJURY



MORIBUND PATIENT



MAST SUIT REMOVAL



SECTION 4

SECTION 4